

## INSTRCUTION FOR UPGRADING SOFTWARE

# CAUTION : DO NOT TURN OFF THE POWER DURING THE UPGRADING

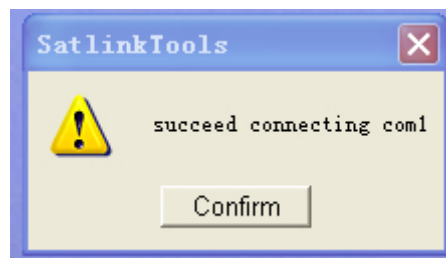
1. Connect this finder with PC through RS-232 cable



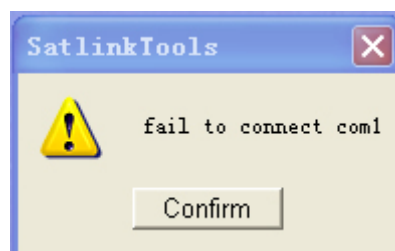
2. Turn on the finder
3. Running the program of SatlinkTools



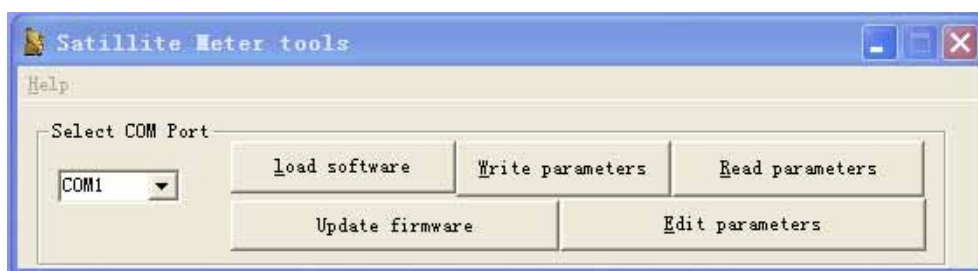
4. When computer shows: succeed connecting com1". Please click " Confirm"



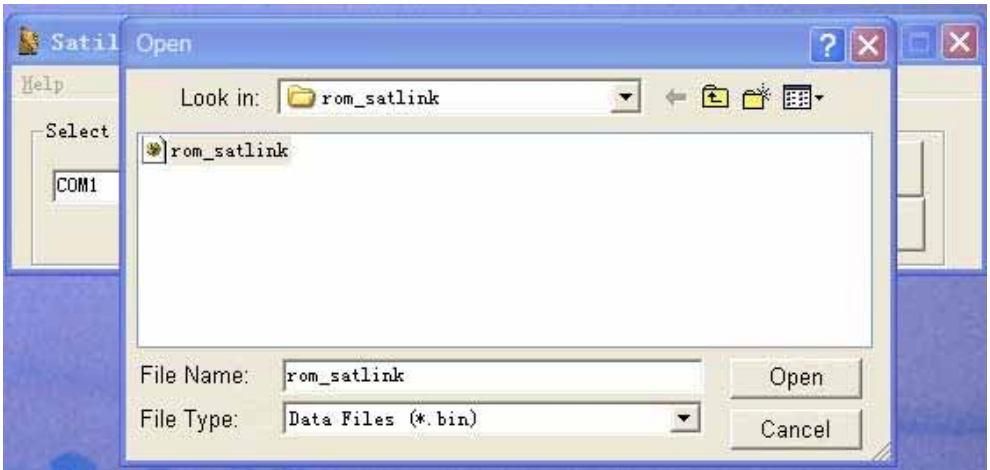
If fail to connect , please check whether this finder already turn on or RS232 cable connecting well with finder or PC



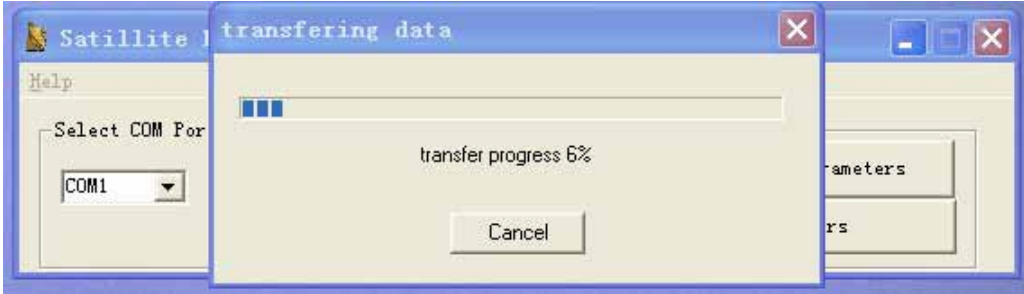
### 5.1 Upgrading the software



Click the " load software" , then you will see the following window



Click YES to star upgrading software



About 2 minutes later, the finder will restart automatically, upgrading software is successful

## 5.2 Upgrading data

Click “Write parameters” then you will see the following windows:



About 2 minutes later, the finder will restart automatically, sat data upgrading is successful.

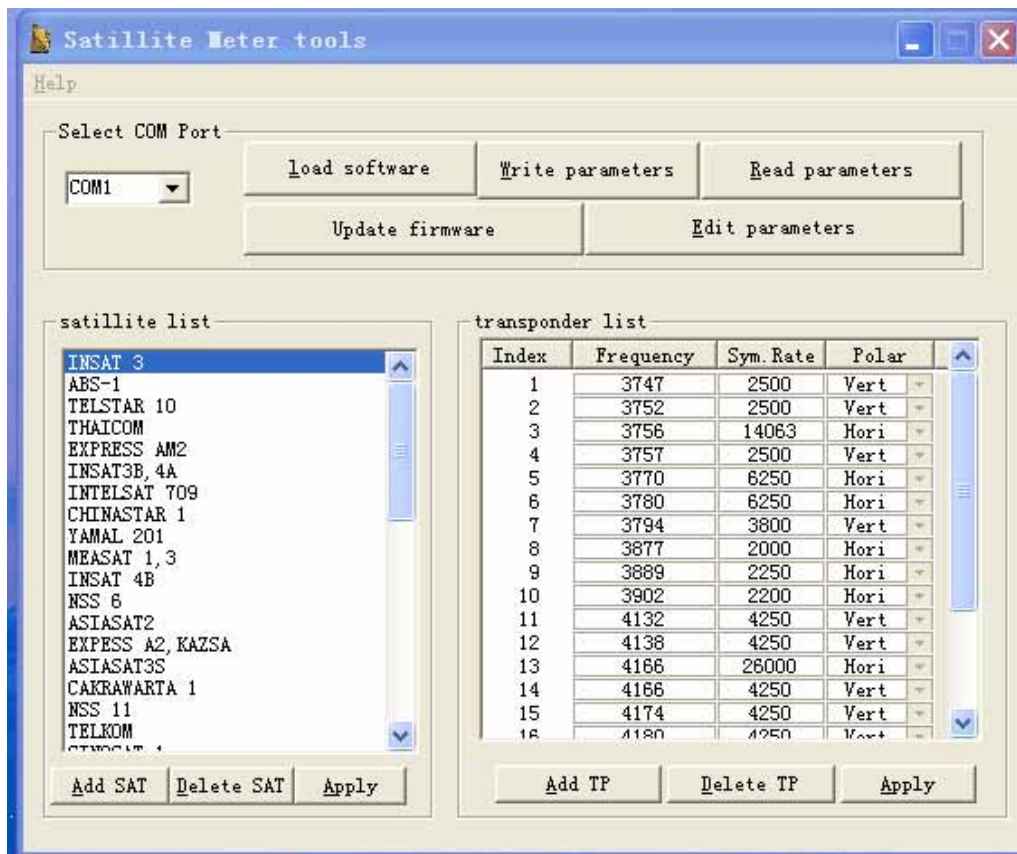
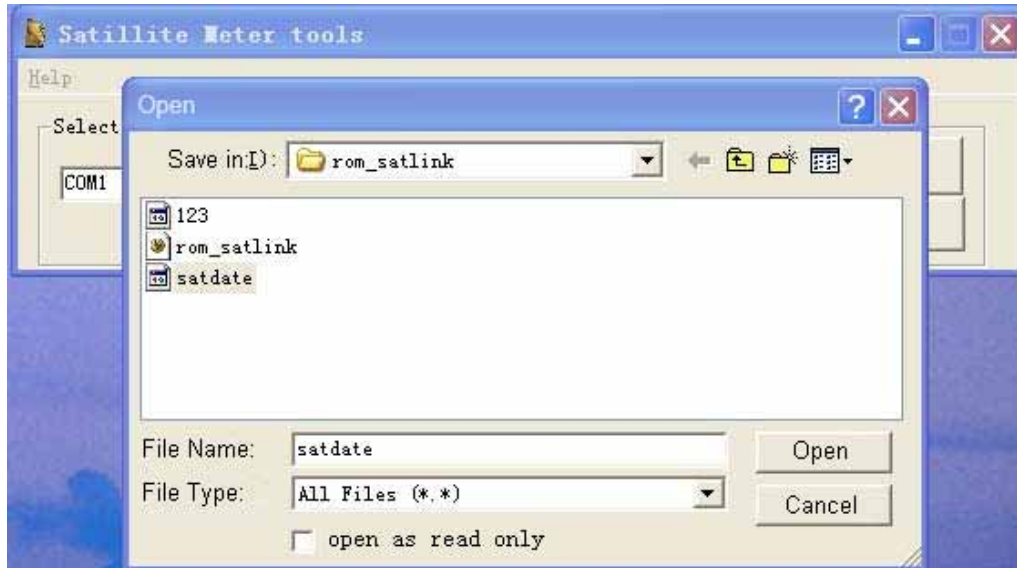
## 5.3 Read the Satellite Meter and save it to the computer

Press “Read parameters” and save it to the computer

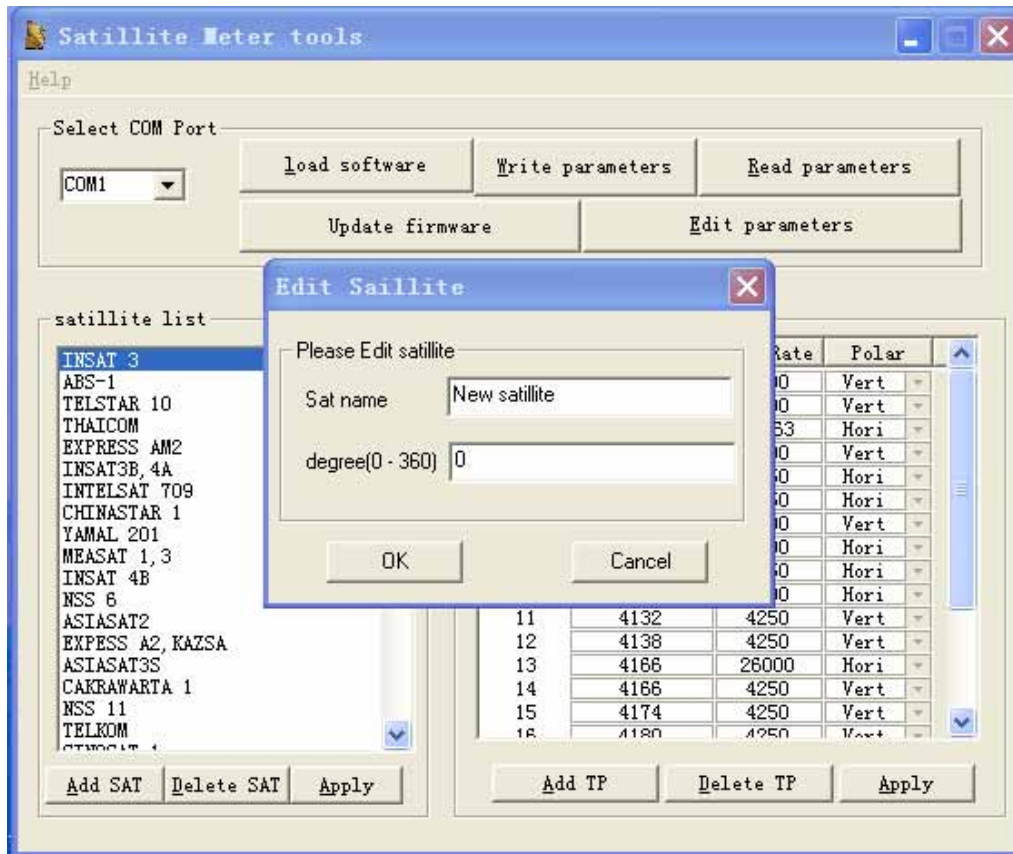


## 5.4 Edit the satellite data

Press “ Edit parameters” , open the data file which offer by the factory or your desire data file ( the data file is 236KB )



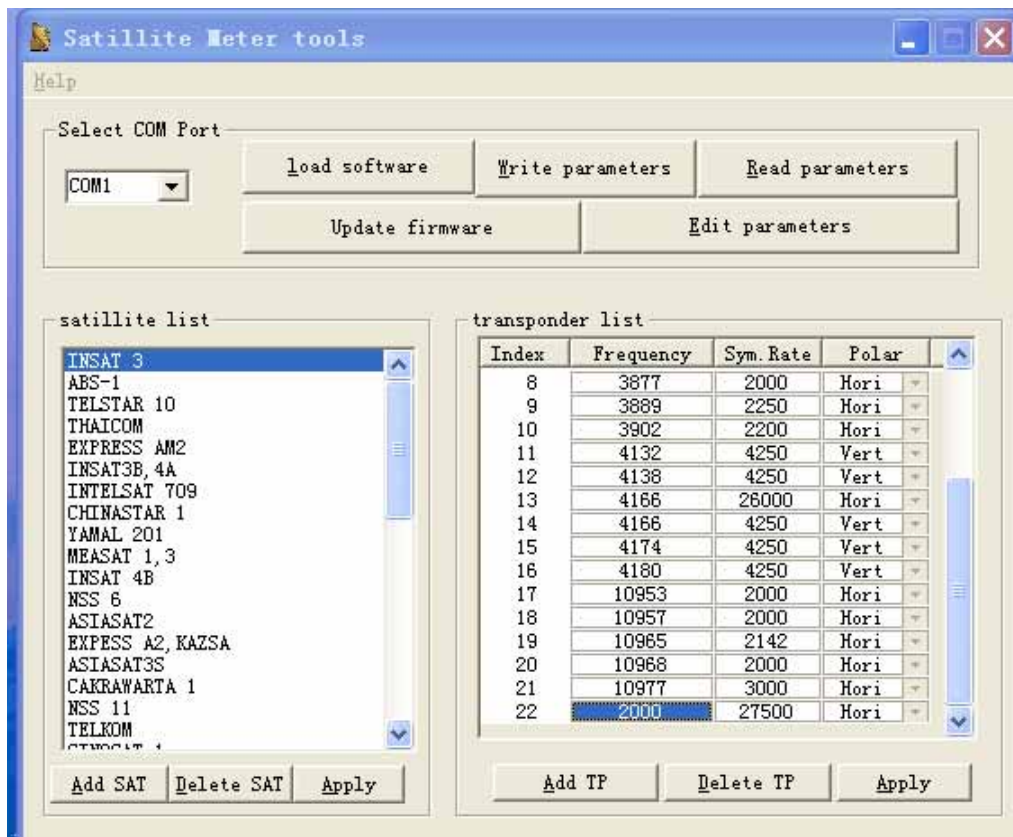
### 5.4.1 Add SAT :



### 5.4.2 Delete SAT :

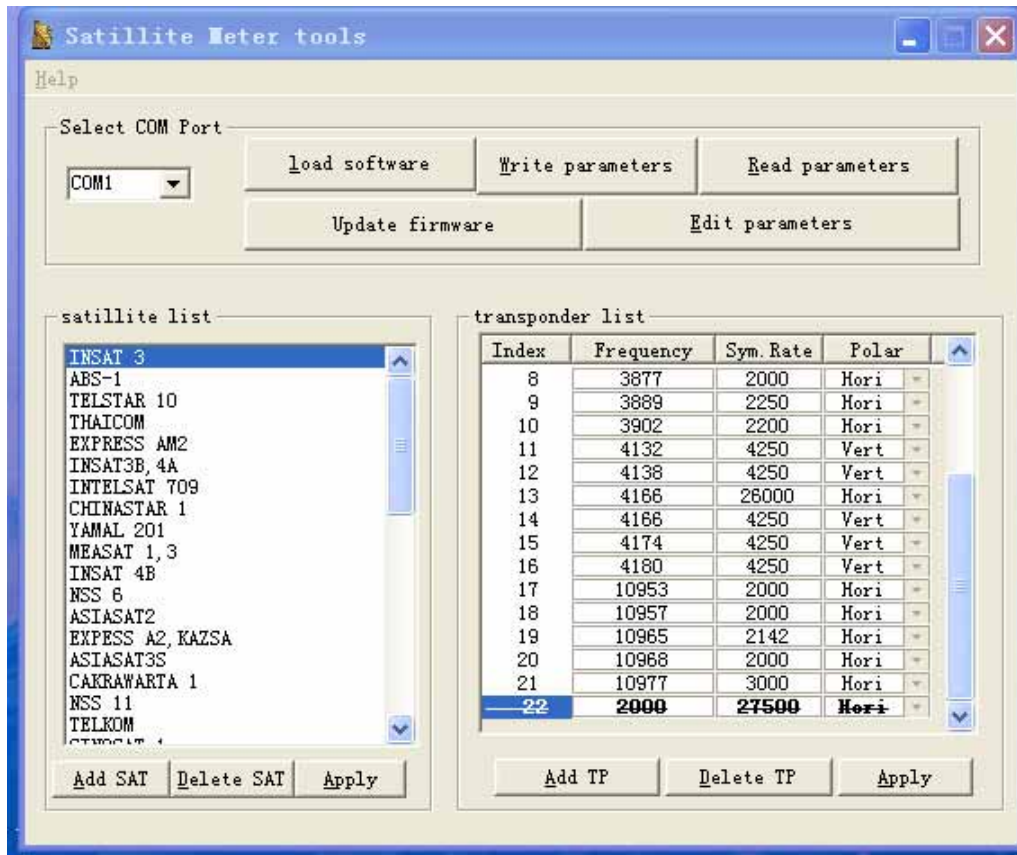
Please choose one satellite you want to delete, then press "Delete button; if you finish operation, press apply.

### 5.4.3 Add TP :



Double click the cell, then you can edit the Frequency ,Sym.Rate ,Polar. Or you can edit the existing TP frequency.

#### 5.4.4 Delete TP :



5.4.5 Apply : If you finish operation, press apply.